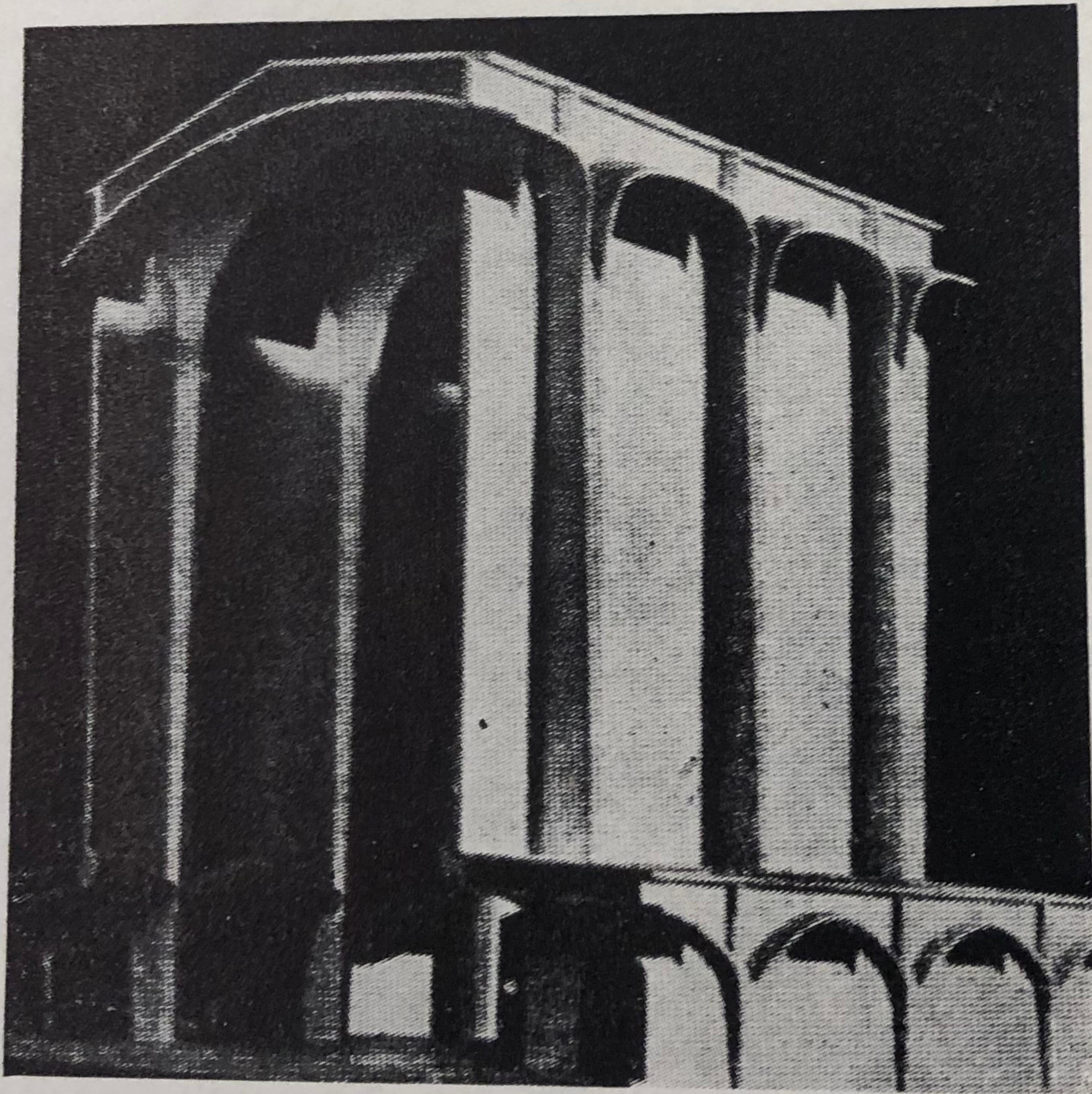


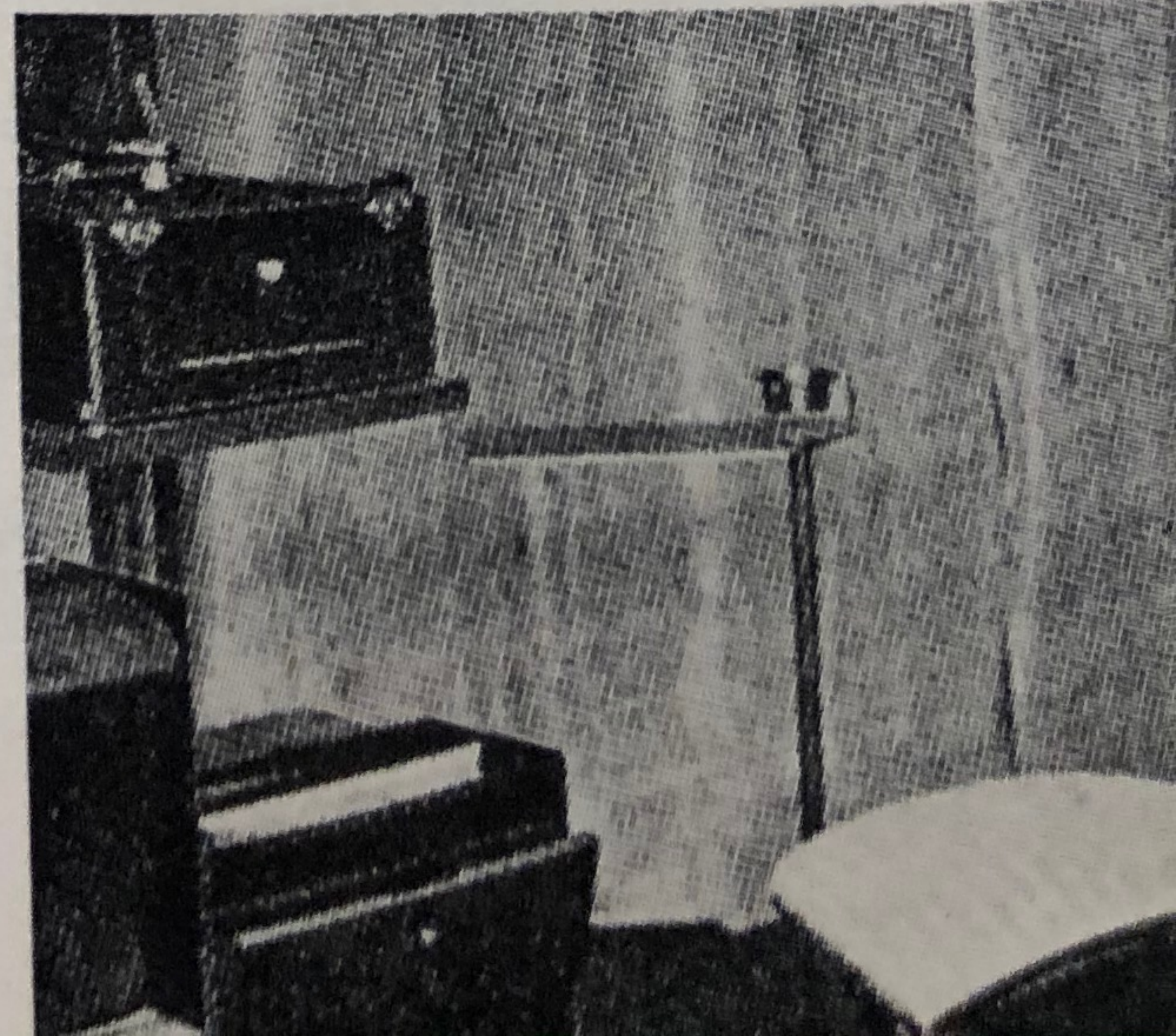
Left and right: *Die Kunst und das Schöne Heim*, Munich, No. 11. A collection of four slick apartment houses in Italy by architect Ugo Luccichenti. The slightly curved facade of one of them has one apartment per floor, each with a triangular balcony. The circular stair in another descends in a glass shaft from marble floor to marble floor, each one housing a solitary millionaire.

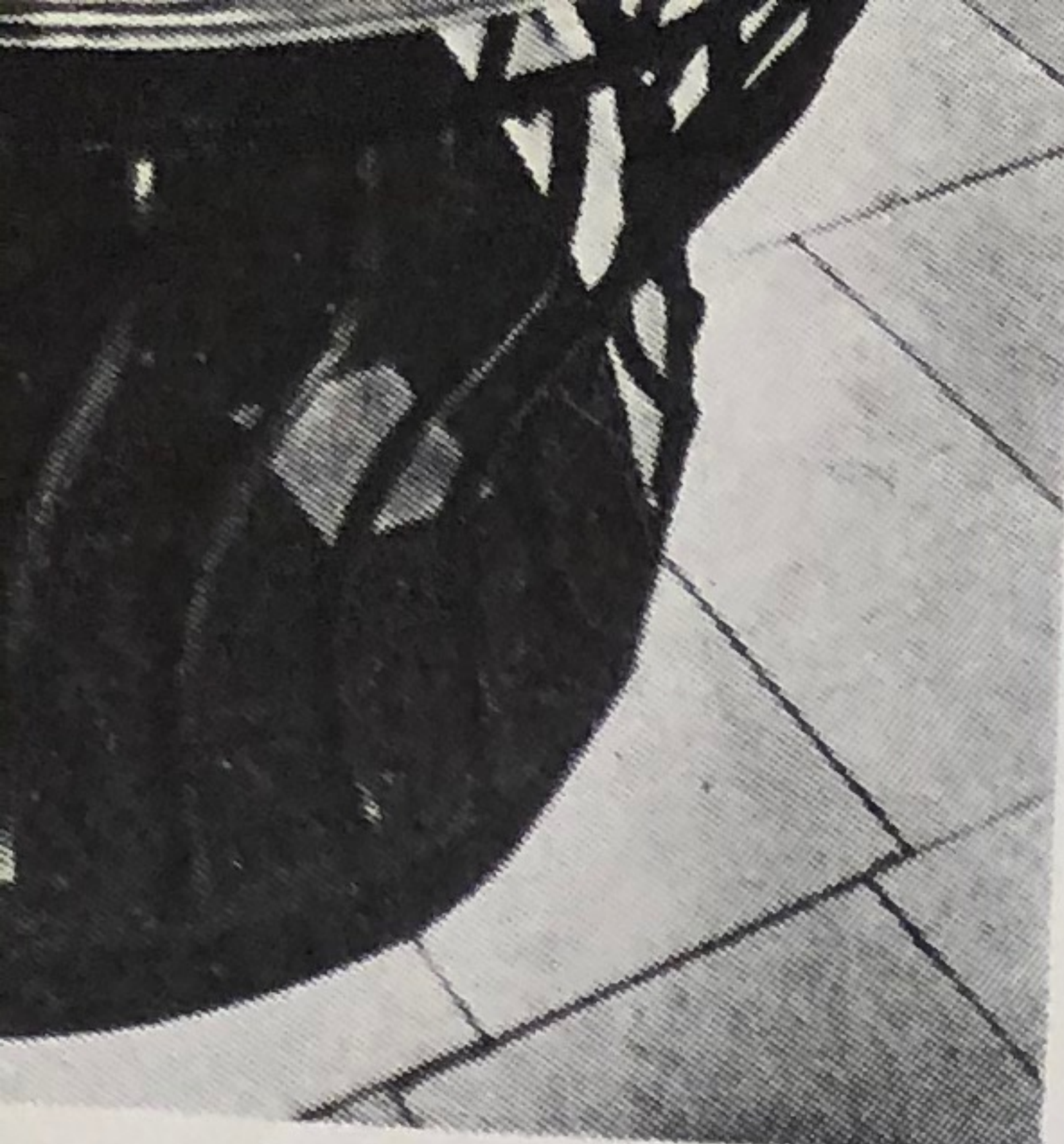


p l i n g o f m a g a z i n e s

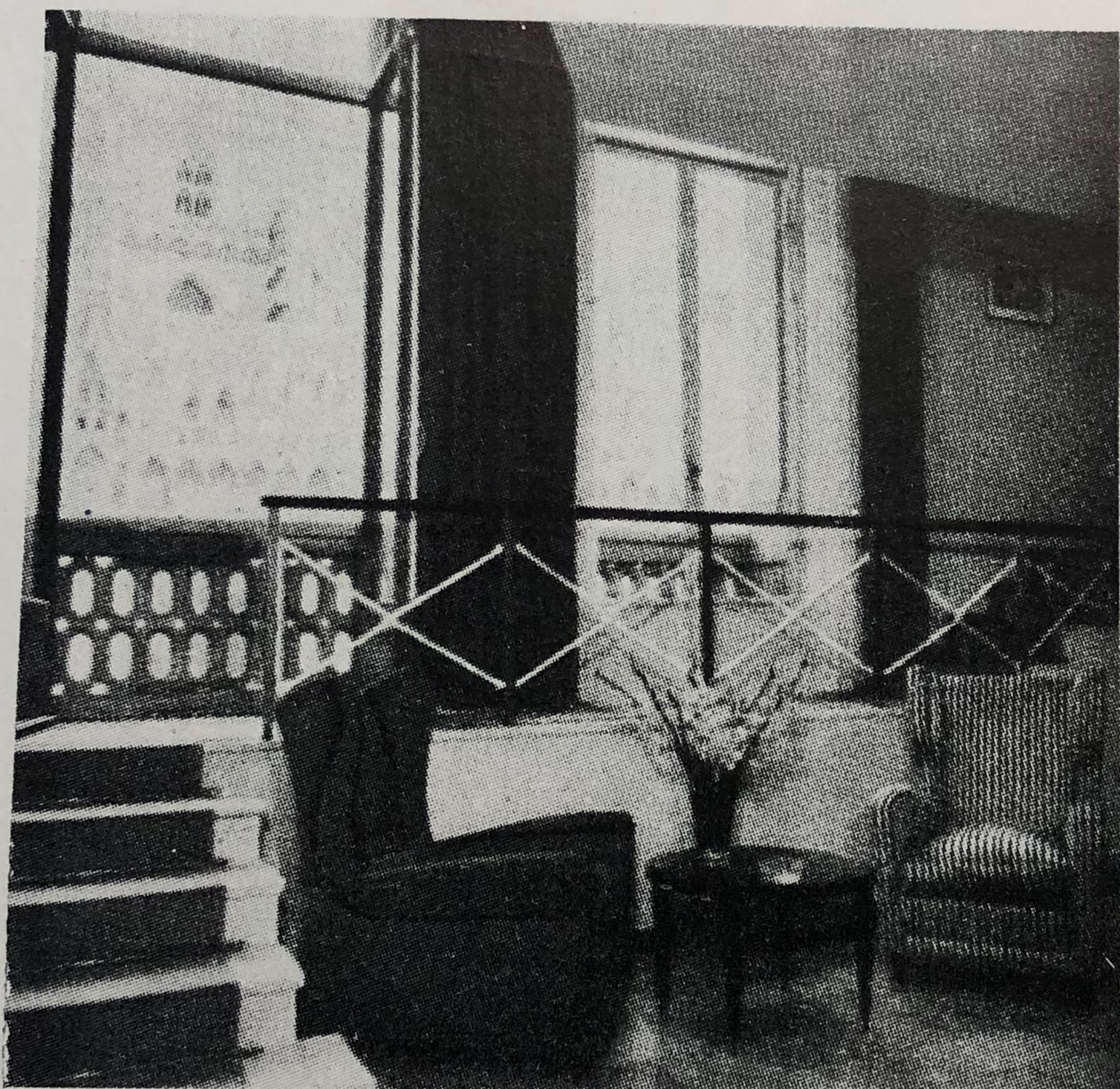


Above: *Metron*, Milan, No. 31-32. A design for a church in reinforced concrete, by architect L. Quaroni. Plan is a Latin cross surrounded by a low, dark space. Light is admitted through top of high nave by windows hooded with concrete eyelids.





*Schöne Heim,*  
er in silver de-  
n-Corrodi with  
and shown in  
on.



Above: *Domus*, Milan, No. 250. Without touching the ancient facade architects Bega and Avati installed a super-hotel in a renaissance building on Milan's Piazza del Duomo. This suite faces the cathedral, has huge windows on the original balcony, and is duplex: the building's enormous rooms allowed vertical divisions for extra floors.

