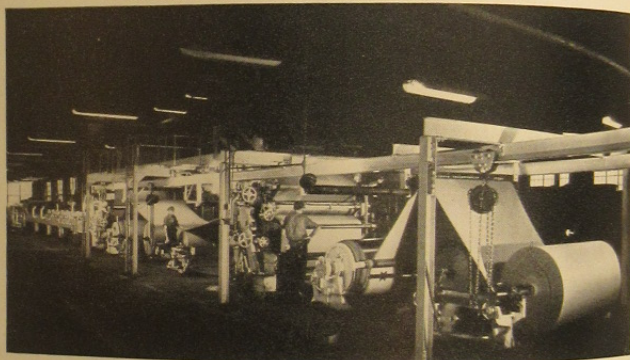


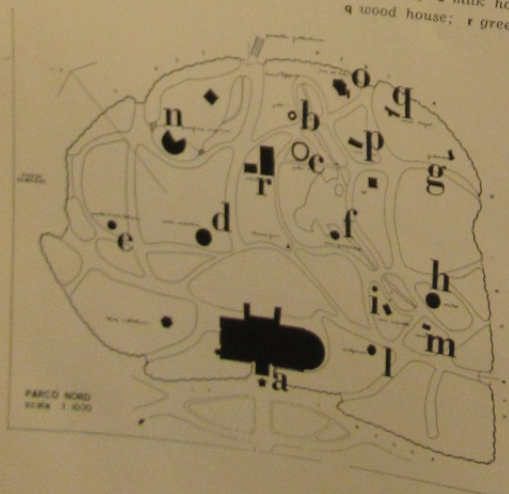
For your information



Photograph above, copyrighted 1954 by the Times-Picayune Publishing Company, shows a conference between Colonel Henry C. Lane, Head of Aviation Logistics, U. S. Marine Corps; R. Buckminster Fuller; and Colonel Paul J. Fontana, Head of the Aviation Operations Branch of the U. S. Marine Corps. Colonel Lane has been studying and tabulating Fuller's experiments as Fuller has directed the construction of model after model with the help of architectural students at the many architectural schools he has visited in his tightly packed academic schedule. Photograph at right shows giant, high-speed corrugating press similar to the type which would be used in making the printed Kraft paper components for domes, in accordance with the process described on pages 18 and 19 of the May INTERIORS.



Map of the Parco Nord, site of the Milan Triennale, showing some of the more important buildings and pavilions: a Palazzo dell'Arte, the main building; b smaller geodesic dome; c larger geodesic dome; d Ondolux building; e Exhibition of the Schools of Architecture; f Japanese house; g Finnish pavilion; h the kindergarten; i Truss house; l Sculpture pavilion; m aluminum house; n Montecatini exhibition; o milk house; p iron house; q wood house; r greenhouse.



Paper dome in the park

As we go to press we do not know for sure whether both of the geodesic domes scheduled to rise in the Parco Nord, site of the Tenth Triennale of Milan (August 25th—November 15th) will be of waterproof paper, or whether one will be of magnesium. Despite handicaps, the undertaking goes forward, however, to balance the lack of an official U. S. government appropriation or, indeed, of help from any public institution, success has been made possible by the generous offer of a cash contribution from Hugh De Pree, president of the Herman Miller Furniture Company, by a waiver of rental fees for the two magnificent sites in the Parco Nord, granted by President Ivan Matteo Lombardo of the Triennale; by the Bakelite Company division of Union Carbide and Carbon Corporation which is donating the vinyl cover for the domes; by the Bakelite

Company, again, plus paper companies who have donated chemicals and paper for the exhibition domes and for the many experimental models that preceded them; by selfless architectural students at Tulane University, Princeton, Cornell, Yale, M.I.T., and many others who gave weeks and months to the building of the experimental models; and to architects Roberto Mango and Zane Yost who will donate their services to supervise the erection of the domes in Milan.

The S.I.D. and other exhibitors

Though the United States will not be represented as an entity at the Triennale except by the geodesic domes, American design products will not be entirely absent from this great international exhibition. The Society of Industrial Designers has contributed a collection of 35 items for the Triennale's International Exhibition of Industrial Design. Carefully screened by the S.I.D.'s Exhibit Committee under Chairman Jay Doblin and S.I.D. President Robert Hose, the collection was packed, insured, and shipped under the supervision of S.I.D. Executive Vice President Peter Müller-Munk. In addition, the Triennale has invited several American manufacturers to exhibit individual furniture models in the Triennale's International Furniture Exhibition.

FOUR KNOLLS

FIRST AWARD—
"Fibra" by Eszter

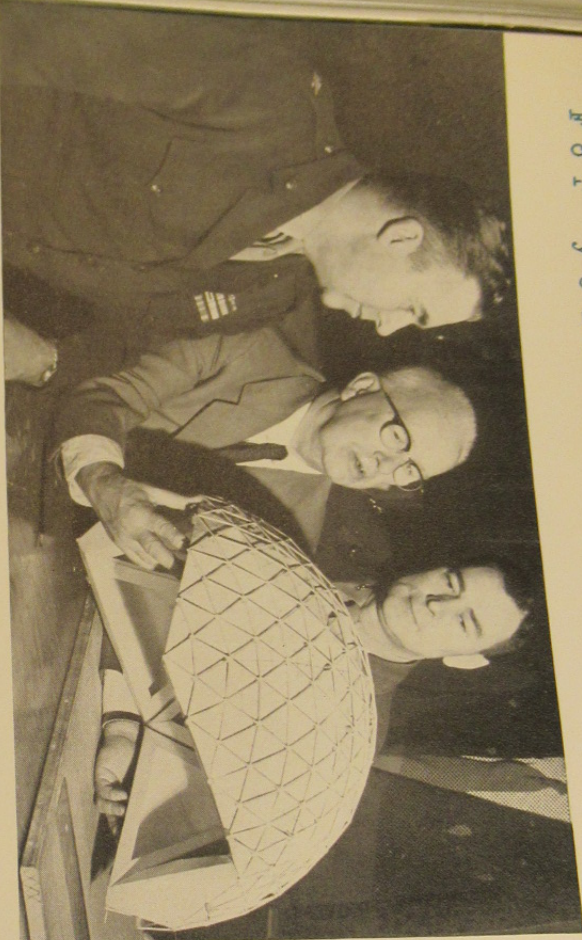
FIRST AWARD—
"Fibra" on sheer

FIRST AWARD,
"Linen Casement"

HONORABLE MENTION
"Kerry Linen" by

KNOLL TEXTILES

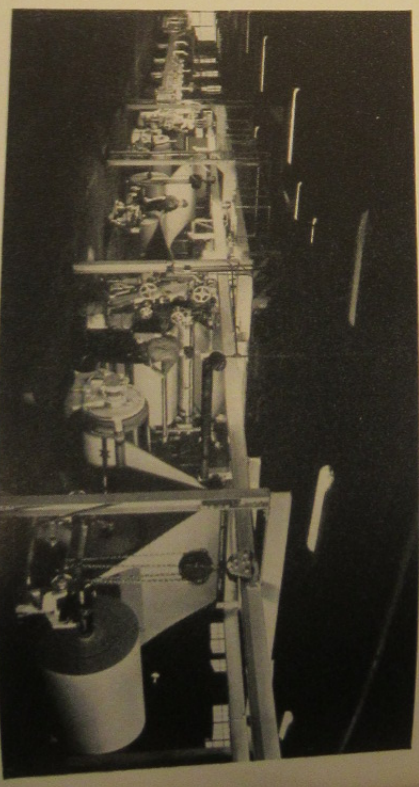
FOR YOUR INFORMATION



Photograph above, copyrighted 1954 by the Times-Picayune Publishing Company, shows a conference between Colonel Henry C. Lane, Head of Aviation Logistics, U. S. Marine Corps; R. Buckminster Fuller; and Colonel Paul J. Fontana, Head of the Aviation Operations Branch of the U. S. Marine Corps. Colonel Lane has been studying and tabulating Fuller's experiments as Fuller has directed the construction of model after model with the help of architectural students at the many architectural schools he has visited in his tightly packed academic schedule. Photograph at right shows giant, high-speed corrugating press similar to the type which would be used in making the printed Kraft paper components for domes, in accordance with the process described on pages 18 and 19 of the May INTERIORS.

Paper dome in the park

As we go to press we do not know for sure whether both of the geodesic domes scheduled to rise in the Parco Nord, site of the Triennale of Milan (August 25th—November 15th) will be of waterproof paper, or whether one will be of magnesium. Despite handicaps, the undertaking goes forward, however. To balance the lack of an official U. S. government appropriation or, indeed, of help from any public institution, success has been made possible by the generous offer of a cash contribution from Hugh De Pree, president of the Herman Miller Furniture Company, by a waiver of rental fees for the two magnificent sites in the Parco Nord, granted by President Ivan Matteo Lombardo of the Triennale; by the Bakelite Company division of Union Carbide and Carbon Corporation which is donating the vinyl cover for the domes; by the Bakelite



Map of the Parco Nord, site of the Milan Triennale, showing some of the more important buildings and pavilions: a Palazzo dell'Arte, the main building; b smaller geodesic dome; c larger geodesic dome; d Ondolux building; e Exhibition of the Schools of Architecture; f Japanese house; g Finnish pavilion; h the

kindergarten; i a... and many others

Company, again, plus paper companies who have donated chemicals and paper for the exhibition domes and for the many experimental models that preceded them; by selfless architectural students at Tulane University, Princeton, Cornell, Yale, MIT, and many others