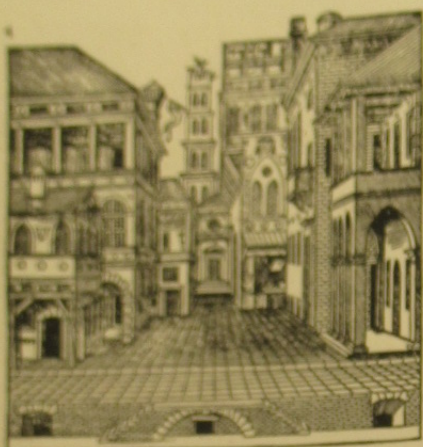


A sampling of magazines



Above: *The Architectural Review*, August, London. Serlio's stage setting for his XV century comedy also illustrates "Ideal City — From Plato to Howard," dissertation by Dr. S. Lang considering visual art rather than technicalities; also exemplified in Filarete's *Sforzinda*.



Above: *Bauen und Wohnen*, No. 6, Munich. Glassed front of Federation Nationale du Batiment, in Paris, made of 126 prefabricated elements. Gravereaux & Lopez accentuated functionalism with Baroque elegance.



Above: *Architektur und Wohnform*, No. 5, Stuttgart. Pleasant, simple collection of Swiss furniture and interiors by Benedikt Rohner in main article. Two-in-one tea tables are reminiscent of Scandinavian moderns; broomstick legs are common to most pieces.



Above: *Marg*, Vol. 5, Bombay. Sinhalese sculpture of gods and imps adorning a ten-foot-thick wall of 300 B.C. Buddhist temple in Polonnaruwa, capitol of ancient Ceylon. Spectacular ruins of that culture surpassed those of Anuradhapura, described in *Interiors*, May 1948.

Below: *Sinketiku*, June, Tokyo. Rehearsal room of Kabuki actor's Tokyo residential studio. Pure, almost mondrianesque, with elegantly delineated elevations; in sliding doors, worked-in geometrical patterns, Kurosaki preserved traditional Japanese style.



Above: *Art et Industrie*, Vol. XX, Paris. Guest wing of mountain *Maison de Plaisance* — a fantastic mixture of style and taste typical of modern French design. Terraces, wrought-iron railings, parquet floors, huge windows — luxurious points of Turbil's mansion.

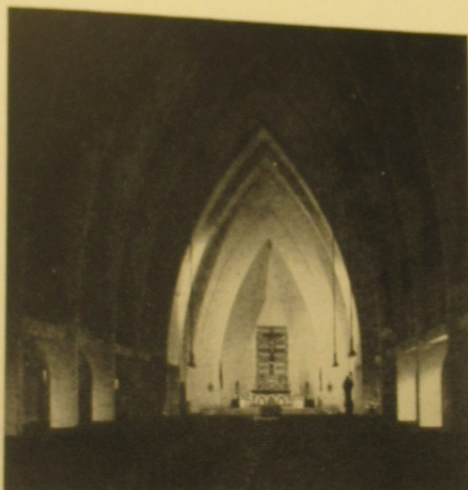




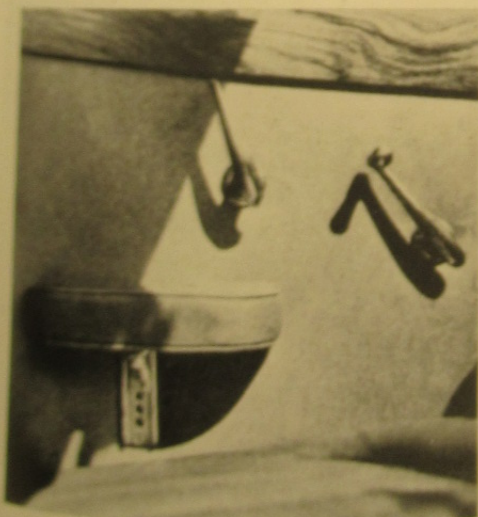
Above: *Architektur und Wohnform*, No. 5, Stuttgart. An Oak and steel display cage is point of interest in gourmet shop of Professor Beardt's Vienna Espresso-Pavillon. Green, white and amethyst enhance combination of Hapsburg and Italian elements.



Above: *Marg*, Vol. 5, Bombay. Inside of Dambulla Vihara, temple in Ceylon. Most of sculpture and frescos depict significant scenes from Buddha's life; other examples of art choose elephants as subjects. Issue preoccupies itself, too, with Sinhalese modern movement.



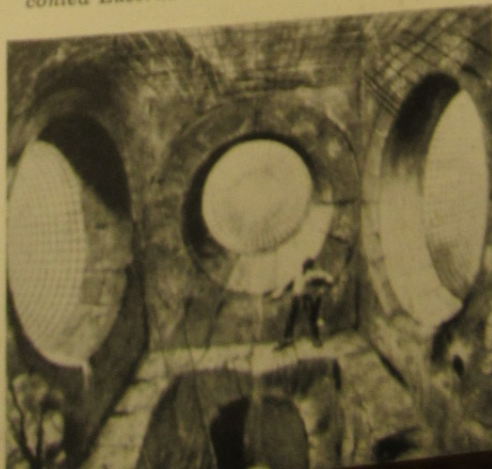
Above: *Architectural Design*, June, London. At first glance, the chancel supported by brick cavity walls in interior of St. Columba's church in Glasgow could be taken for Amiens Cathedral. Gillespie, Kidd & Coia introduced into it a secular element — an apartment for personnel.



Below: *Prospettive*, No. 2, Milan. Projected stage setting by Giorgio Wakewitch, mirroring sombre atmosphere of XVI century's genre theatre. Colossal structure overpowers silhouette of actor. Monumental, two family balconied Luserna stone house also shown.



Above: *Architektur und Wohnform*, No. 4, Stuttgart. Entrance hall of the new Koeln Radio Station building, by P. F. Schneider. Photograph of ground-floor shows suspended staircase—a principle employed throughout the structure to provide better acoustic vibration.



Above: *The Ambassador*, November, London. Simple, yet practical Nash's new model "The Sumner Regency" is symbol of precision in workmanship. Easily adjustable armrest is but a detail of fine furnishing quality of this seventy-to-eighty mph connoisseur's compromise.