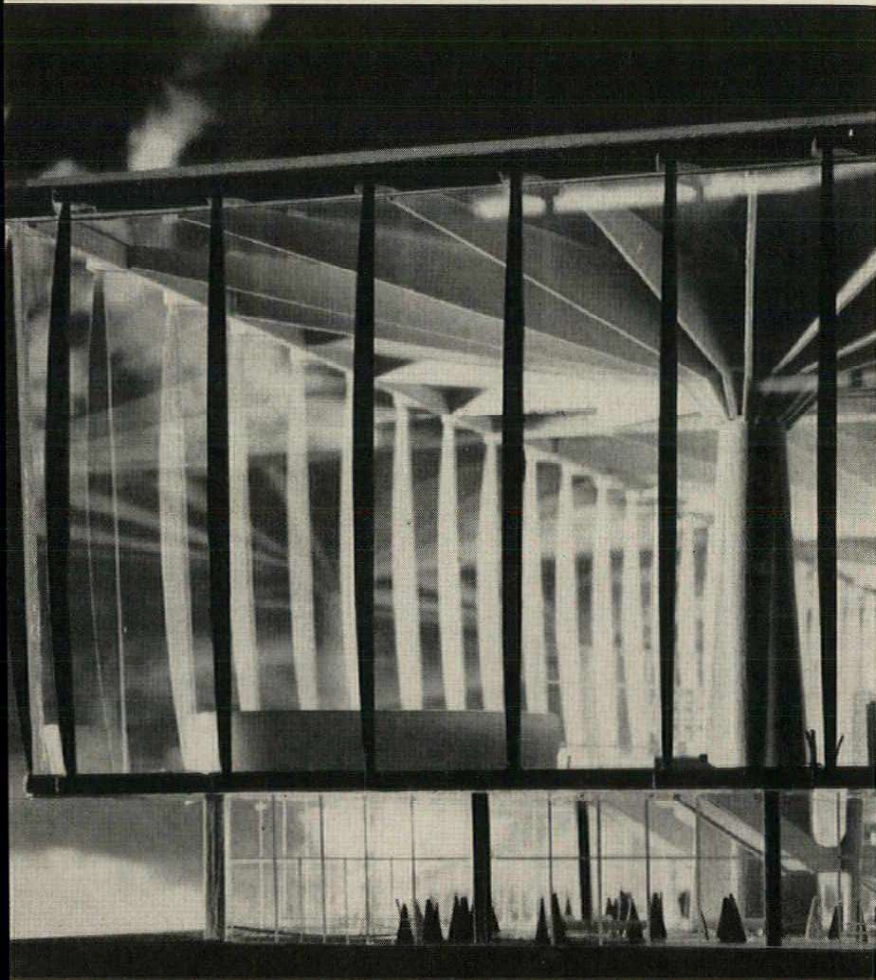
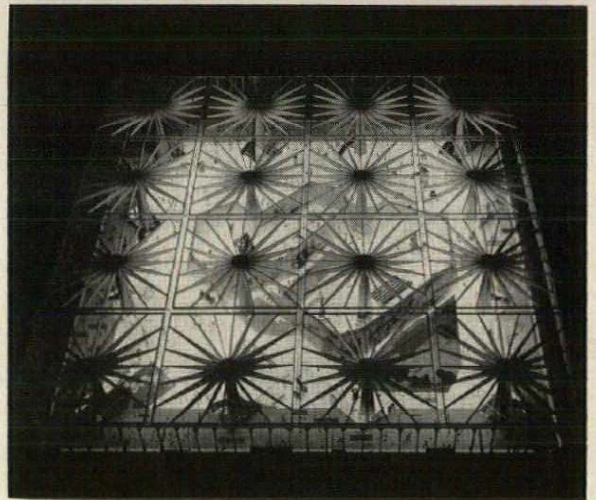


NERVI DESIGNS PALACE
HONORING MAN AT WORK
FOR ITALIAN CENTENNIAL



The Labor Exposition Building designed by Antonio Nervi for the Italian Centennial celebration at Turin, which will be held from May through October of 1961, covers approximately 286,000 sq ft. It will be larger than the Church of Saint Peter and the Coliseum in Rome.

The roof, measuring 525 sq ft, is supported by 16 gigantic concrete and steel columns 82 ft high. Each column supports a roof section 130 ft square. Light streams down from above, from openings six ft wide between each of the independent roof-pillar units.

The "Palace of Labor" will house exhibits from about twenty countries. Gio Ponti is generally responsible for the interior design of the exhibition hall and of the national exhibits displayed there.

