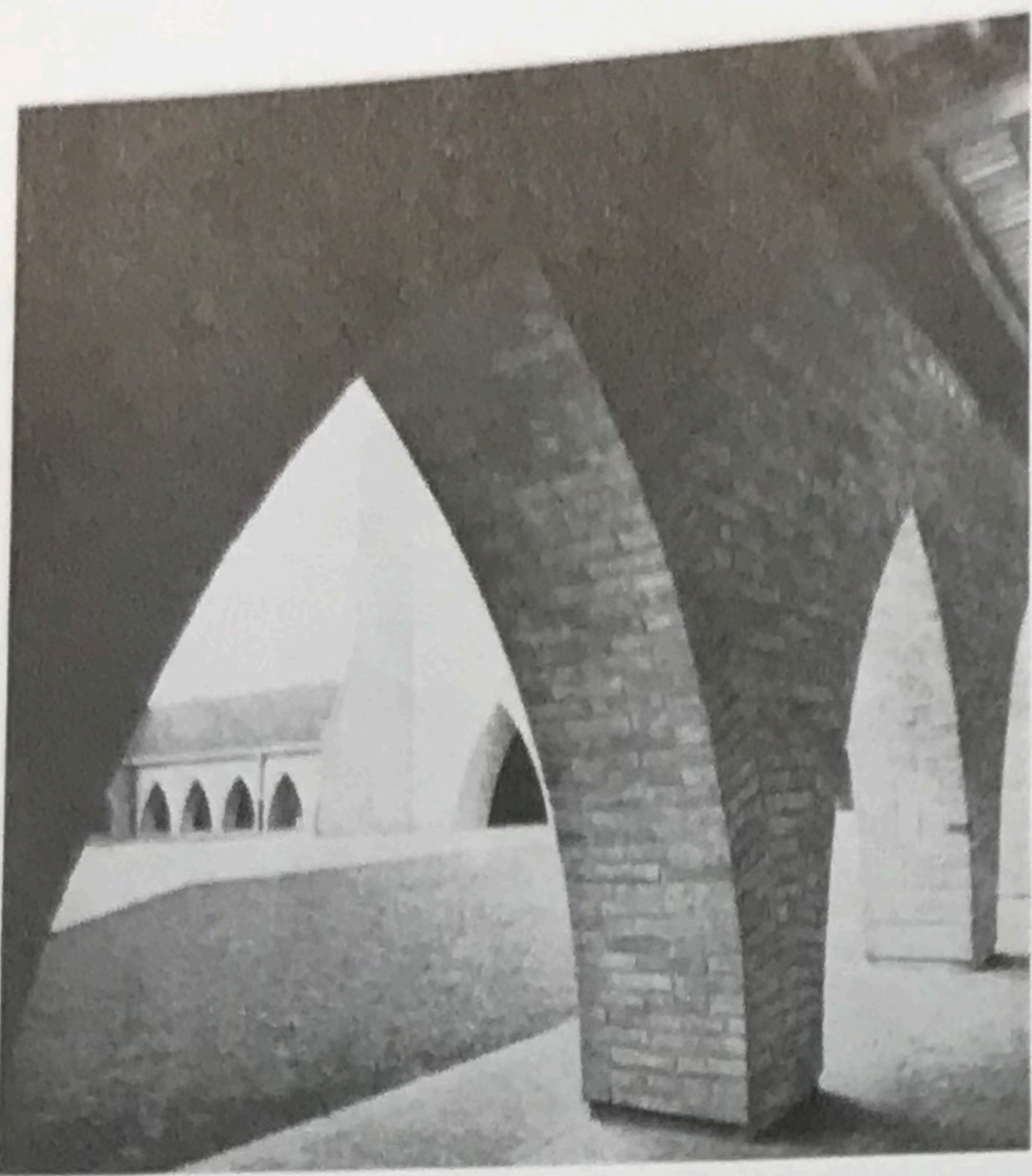
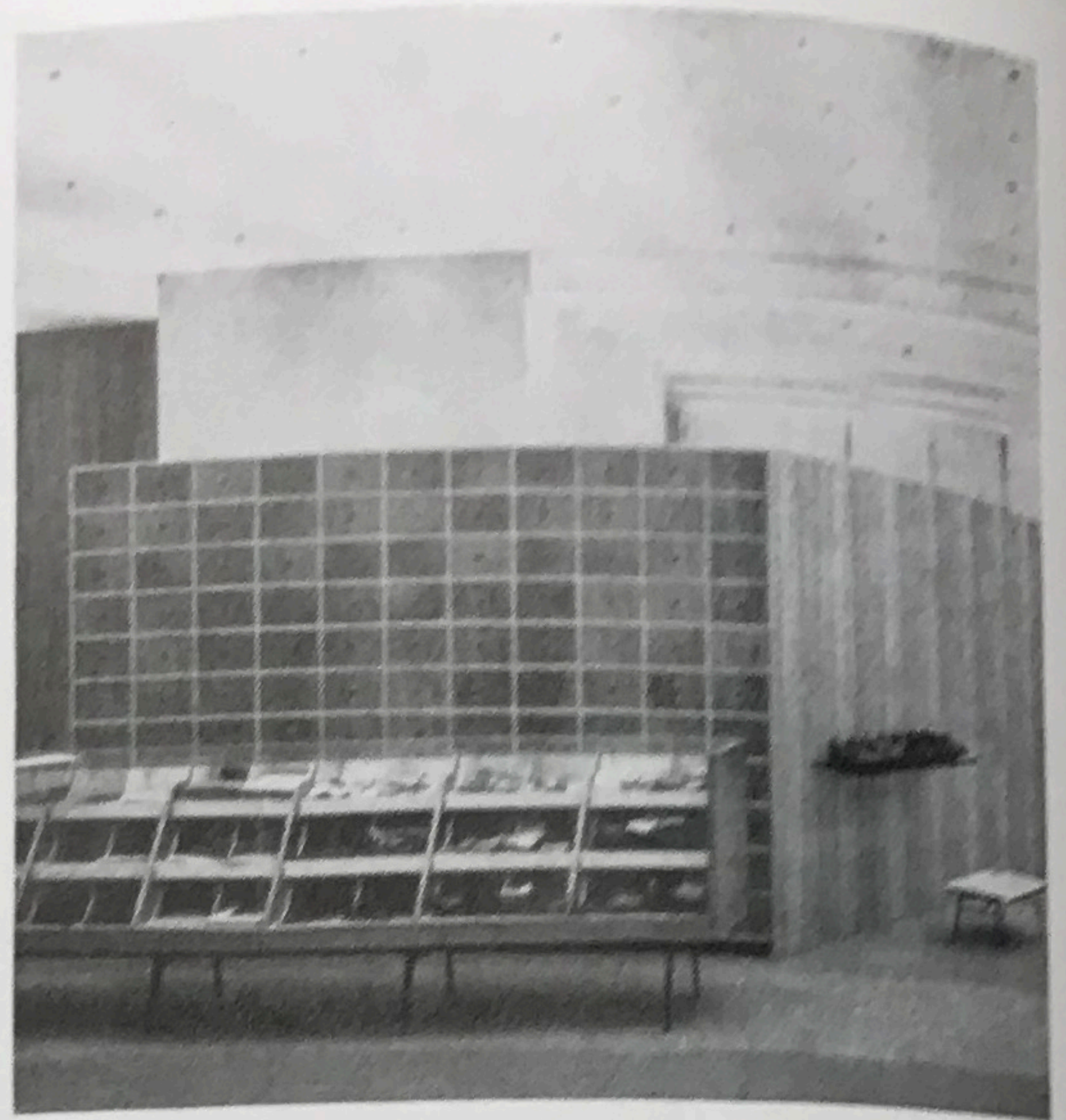


# A sampling of magazines



Left: *Bouwen en Wonen*, No. 1, Antwerp. A contemporized Moorish arch provides the dominant motif for the Church of Saint Nicholas, Oostduinkerke, by Jean Gilson.

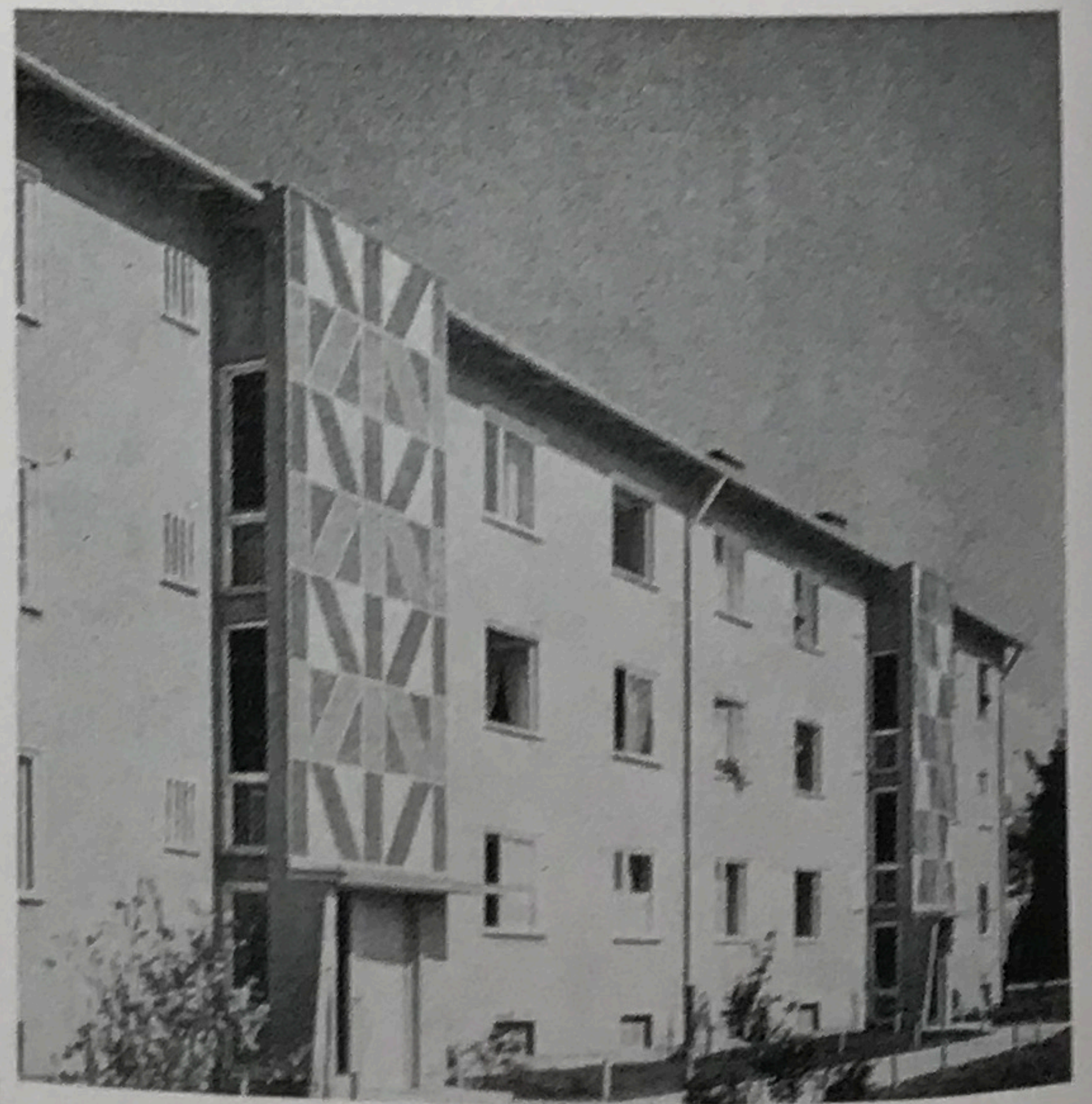
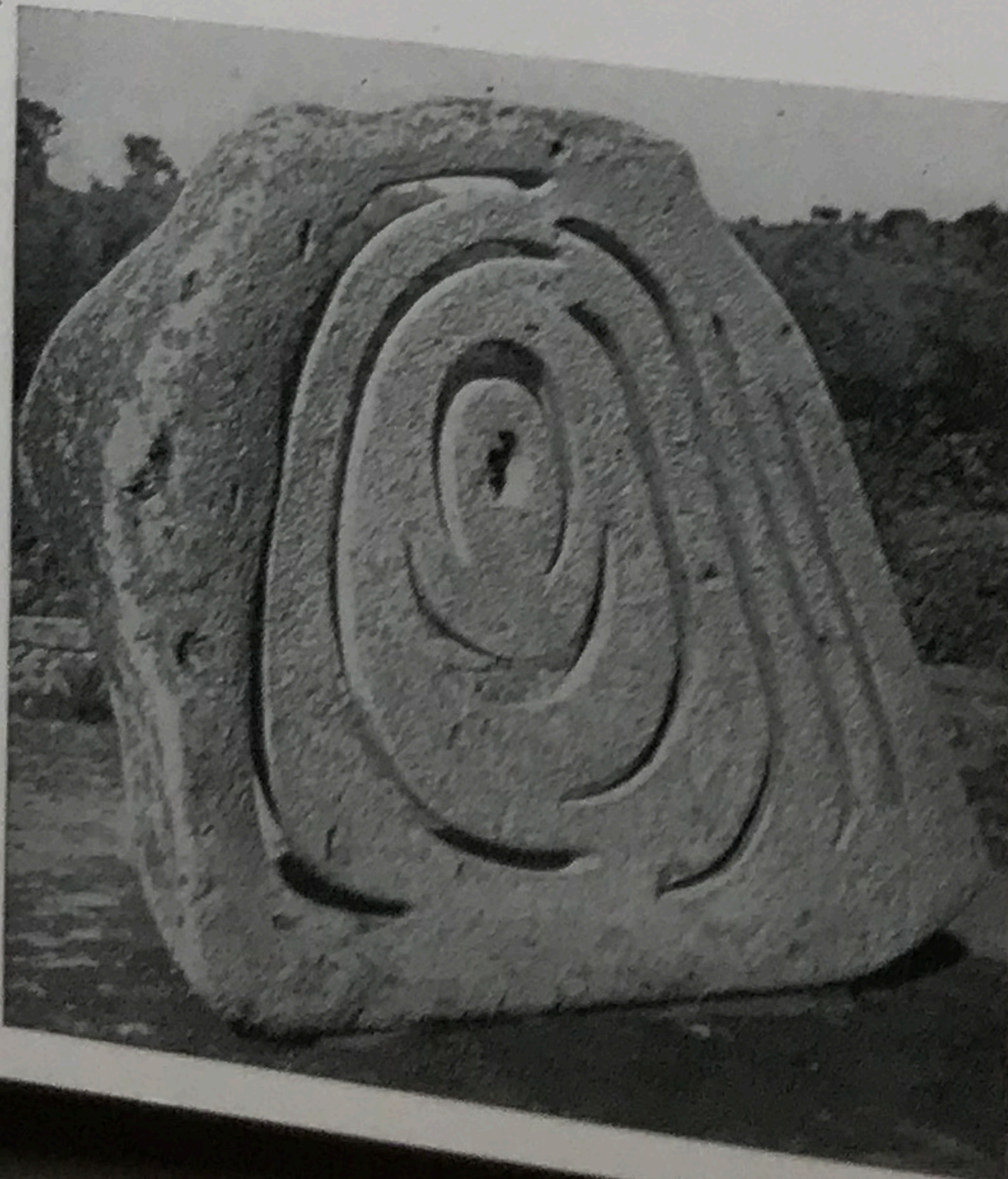
Right: Design, No. 99, London. These are not streptococci under a microscope, but a group of egg beaters garnered by Sweden's Home Furnishings Institute for testing.



Above: *Architektur und Wohnform*, No. 3, Stuttgart. A shoe store in Dusseldorf designed by Bernard Pfau has these crisp ash and planewood cases in the stocking section.



Above: *Domus*, No. 329, Milan. Powerfully articulated triangles are reiterated for a sheet iron fireplace, and a steel and walnut staircase designed by architect Piero Ranzani.



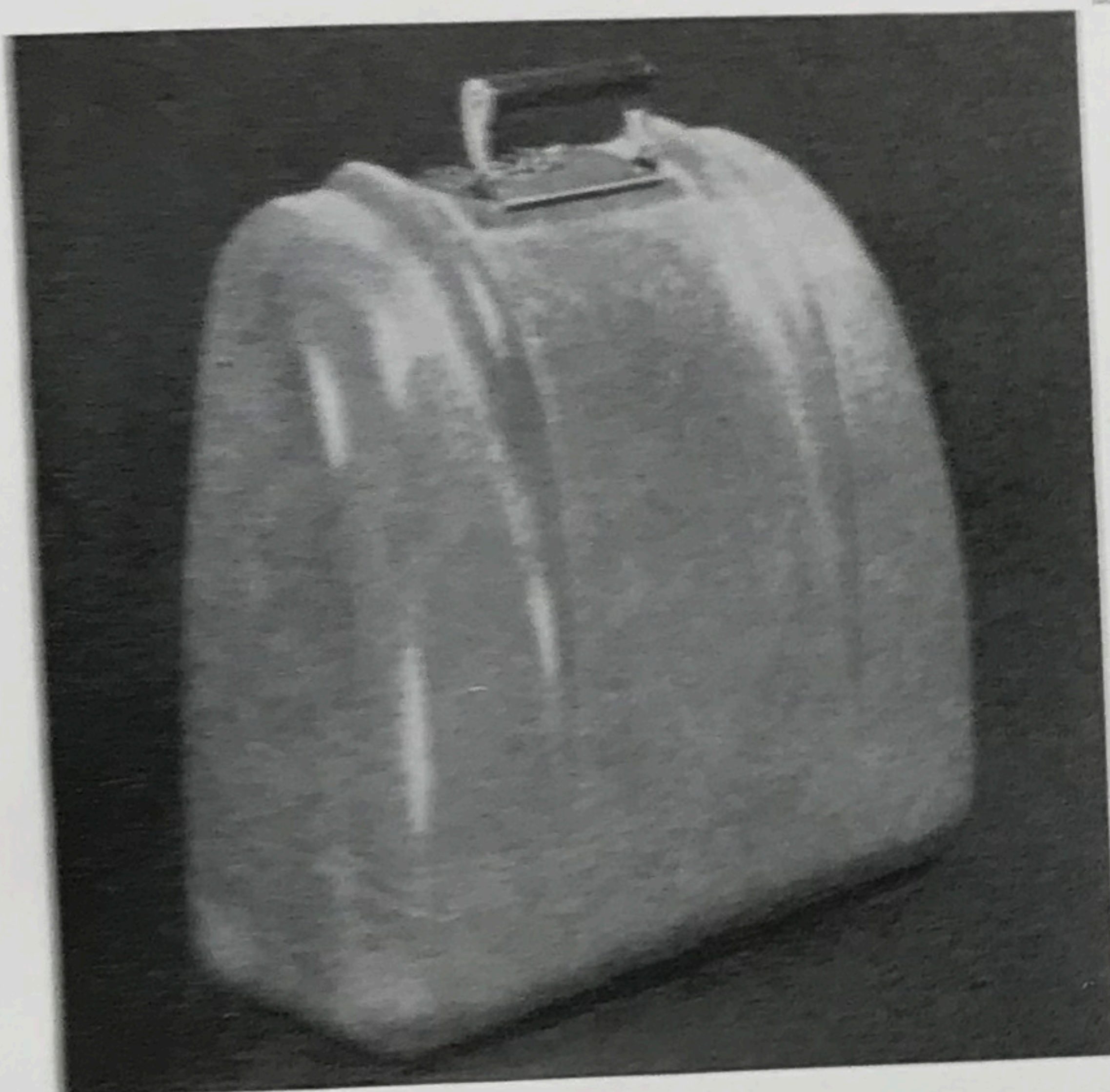
Above: *Die Deutsche Bauzeitung*, No. 1, Stuttgart. A lintel-to-roof panel in bright colors enlivens the facade of a housing development in Munich by Etzold and Strobel.

Left: *Werk*, No. 1, Zurich. This monumental monolith illustrates an article on Swiss sculptor Hans Aeschbacher. It is the first version of his Harp, and is fashioned of lava stone.

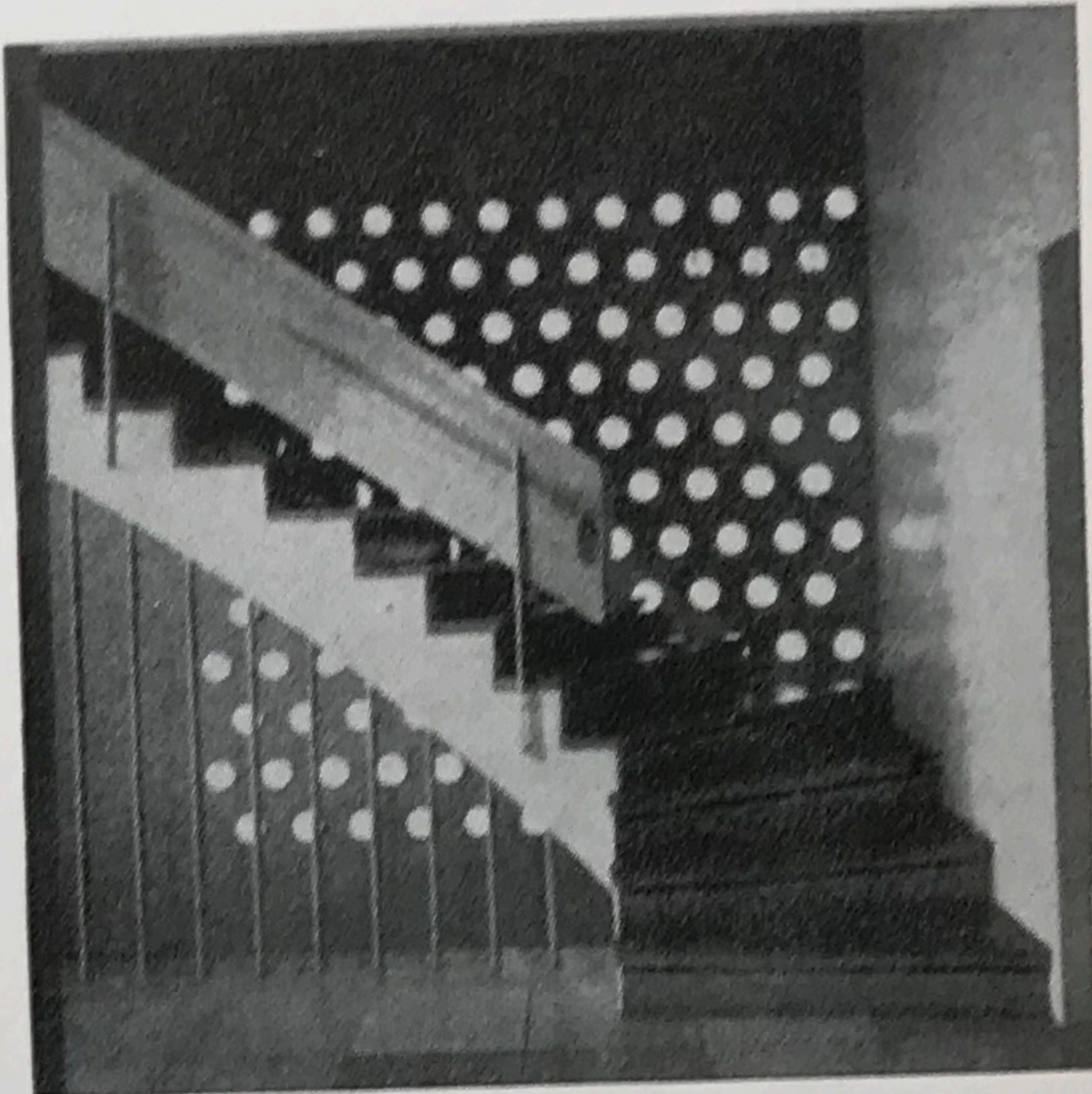
f r o m a b r o a d



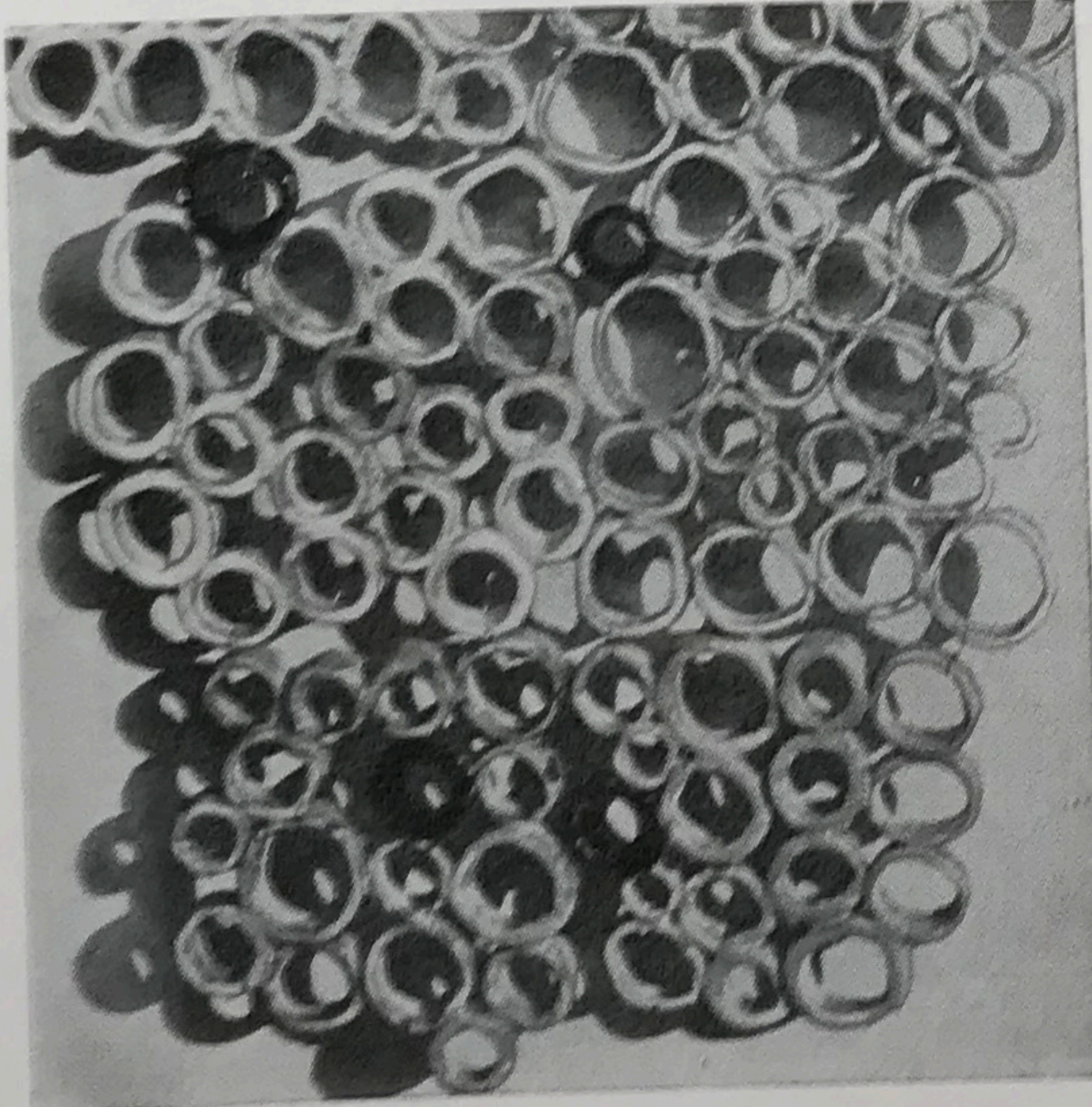
Left: Mobilia, No. 1, Copenhagen. An iron frame, rubber webbing, sacking, and a thin layer of foam rubber make up the contents of Grete Jalk's slim upholstered shell chair.



Above: Design, No. 98, London. This compact and lightweight fiber glass typewriter case is one of the first products to be molded with matched dies in Great Britain.



Above: Architektur und Wohnform, No. 3, Stuttgart. Pale beech stairs rise against a pierced interior wall in a house in Dusseldorf designed by architect Bernhard Pfau.



Right: Domus, No. 329, Milan. This ceramic wall grille by Fausto Melotti is part of the Formes Idées d'Italie exhibition in Paris, revolving around the work of Gio Ponti.

Below: Form, No. 10, Stockholm. Arne Rudberger designed this lighting fixture, which is actually an outcropping of poured concrete walls in a museum in Sundsvall, Sweden.



Left: Techniques & Architecture, No. 6, Paris. This delicate bridge spanning a pond is one of the amenities included in Marc Piccard's landscape scheme for a Lausanne school.

