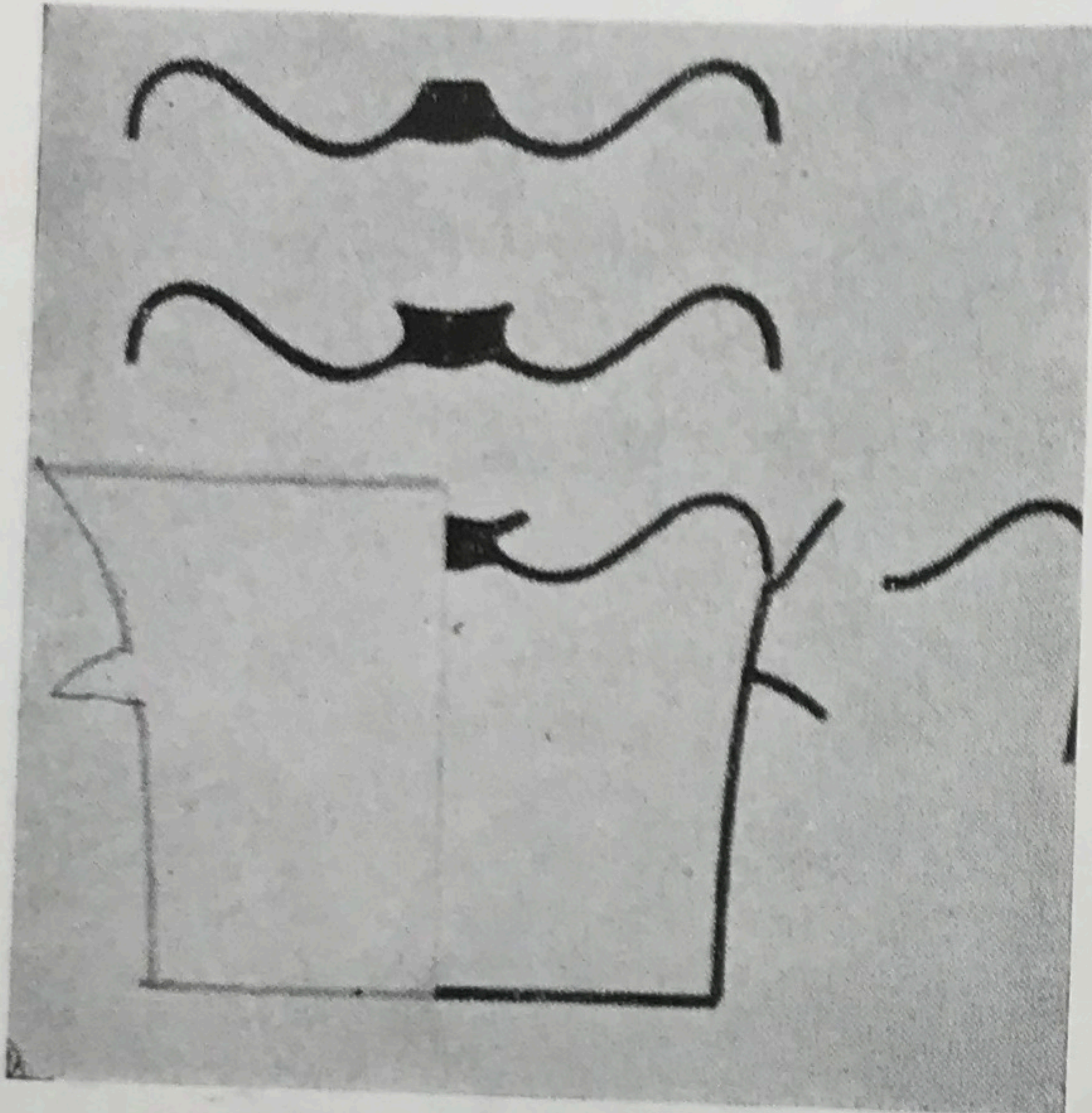


A sampling of magazines

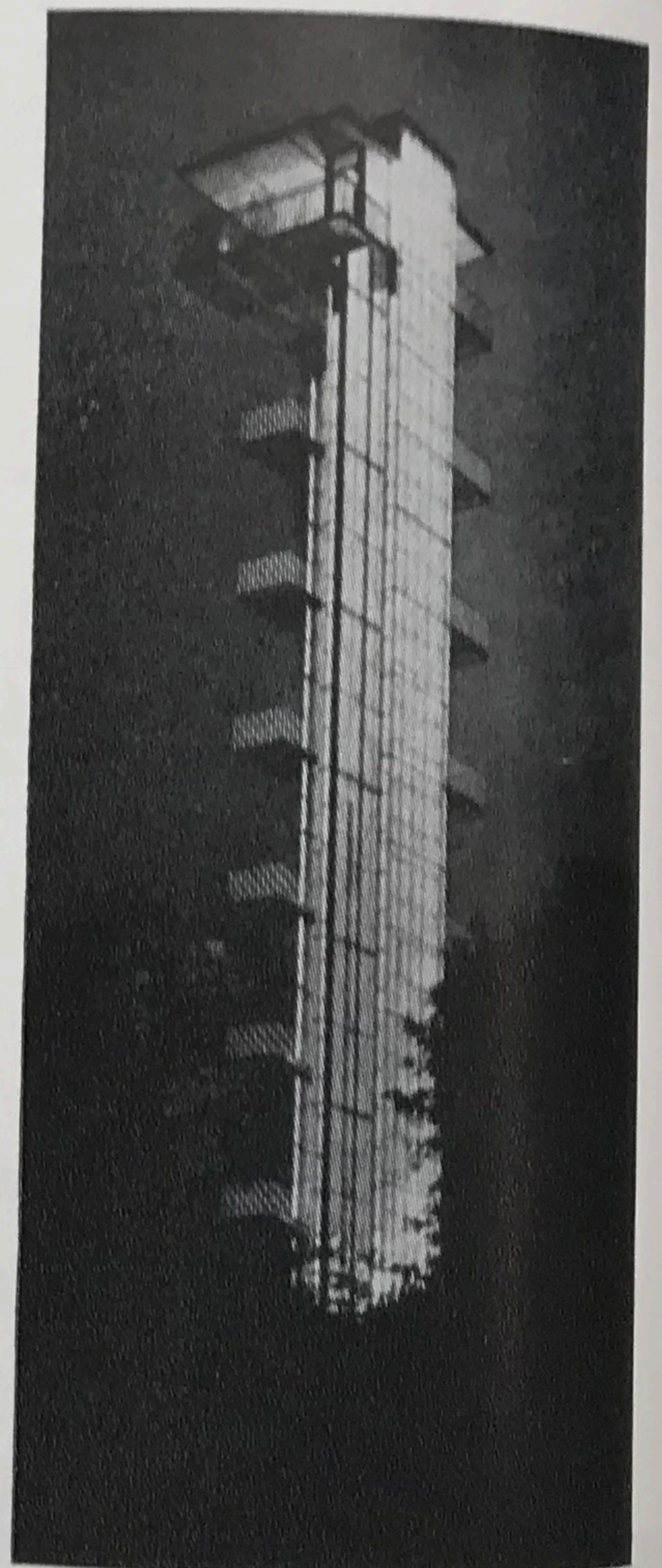
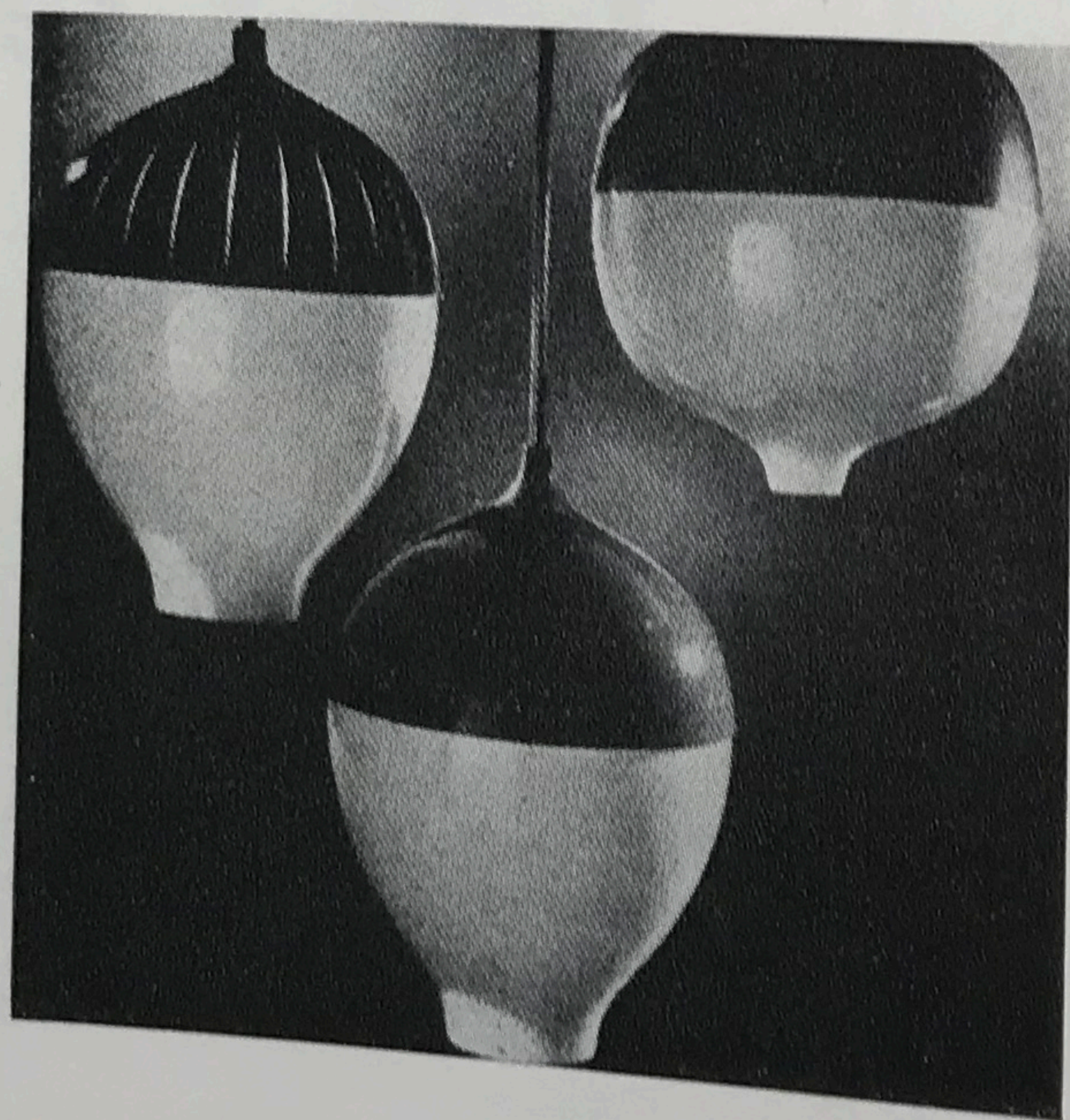
Right: *Werk*, October, Zurich. Poetic stone water conduit, other sculpture, part of dream-like garden of Zurich's Waid City Hospital by Paul Speck. Also, new Swiss skyscrapers, dramatic prefabricated station platform shelter.



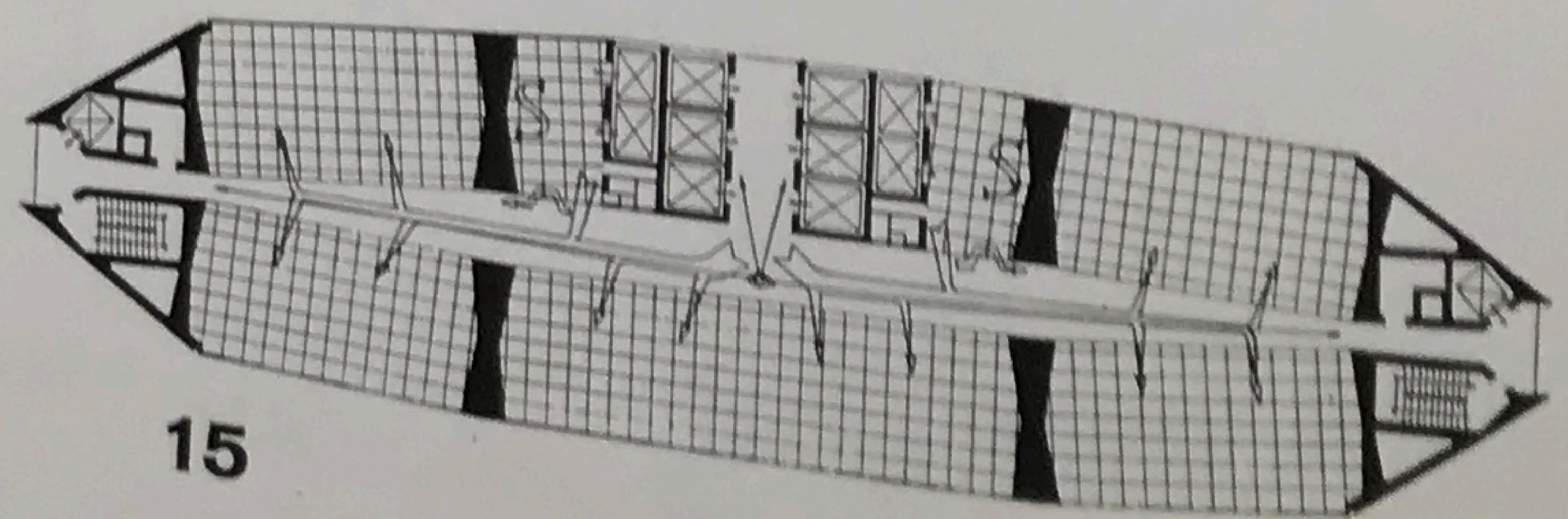
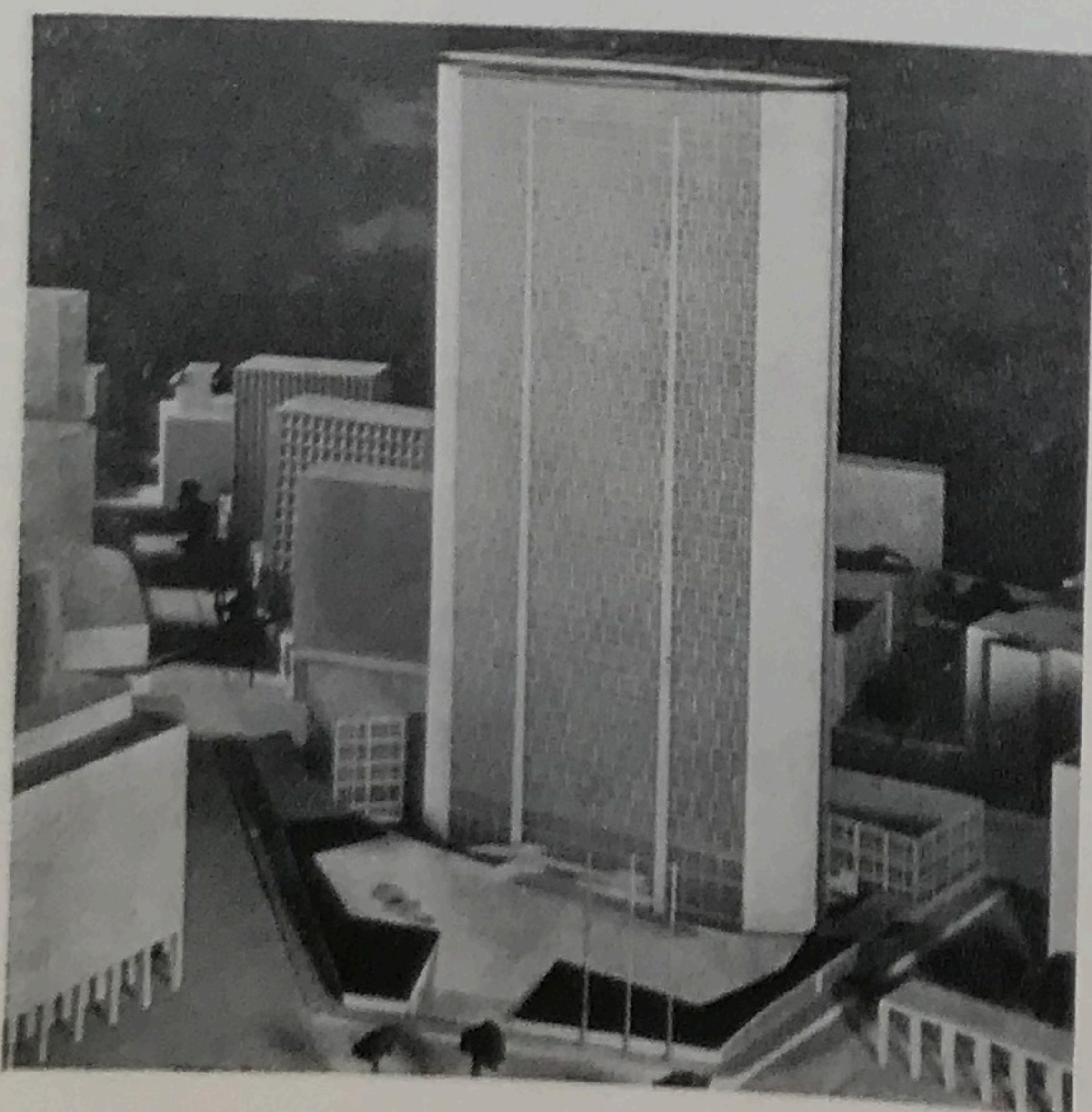
Below: *Bonytt*, October, Oslo. Two versions and final silhouette of ceramic stacking casserole in issue devoted to tableware.



Below: *Architectural Design*, October, London. Opal globes and colored aluminum caps in lamps by Misha Black. Also, Chicago redevelopment, design of large metal windows.



Above: *Die Kunst und das Schone Heim*, September, Munich. Glass and steel observation tower at Hamburg exhibition grounds by architect Bernhard Hermkes, his semi-elliptical greenhouse.



15

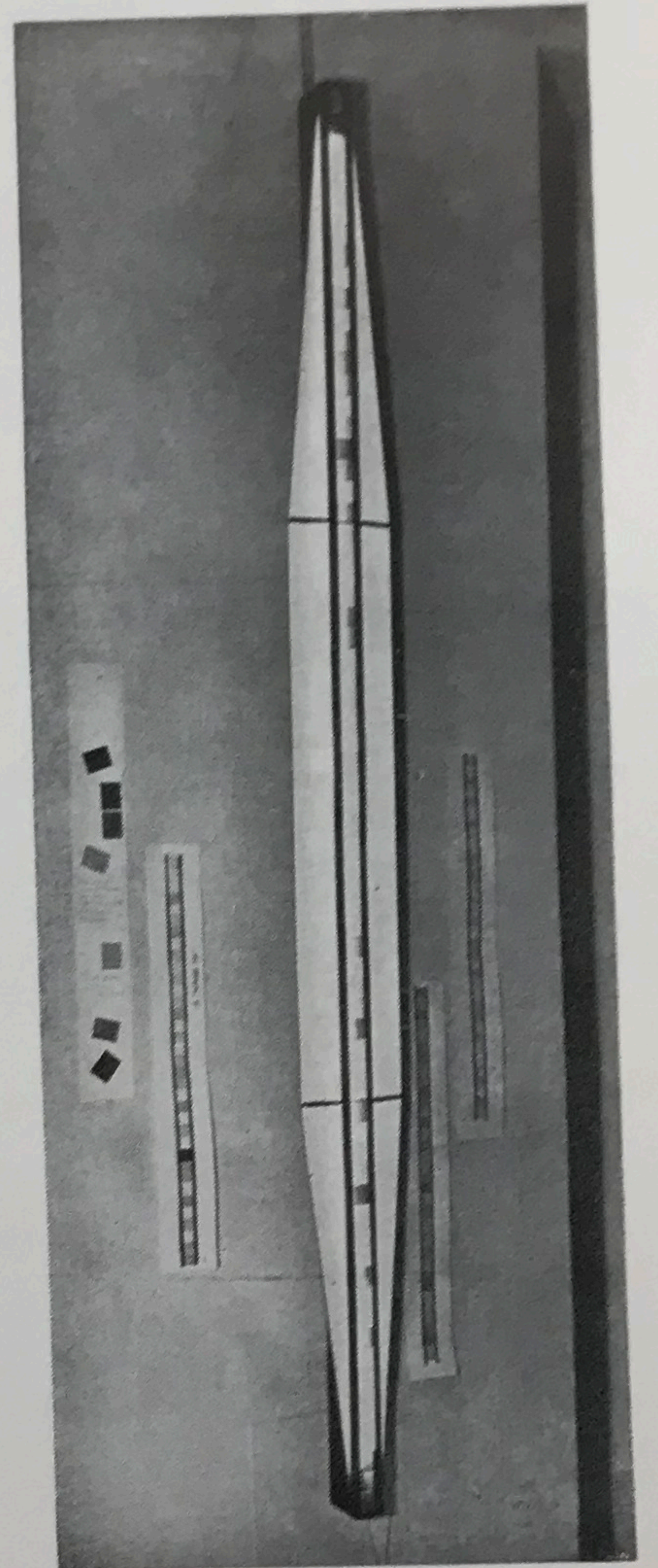
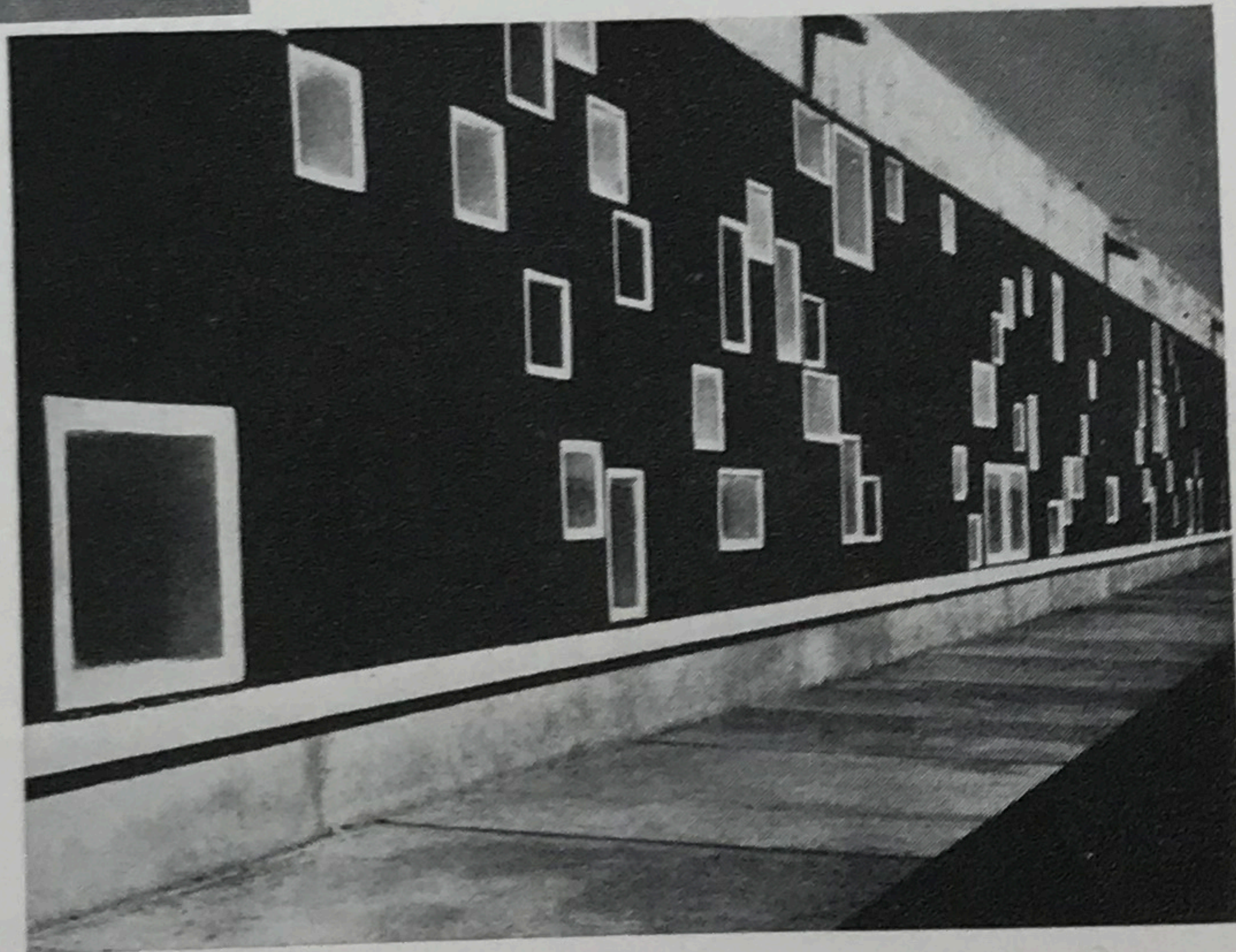
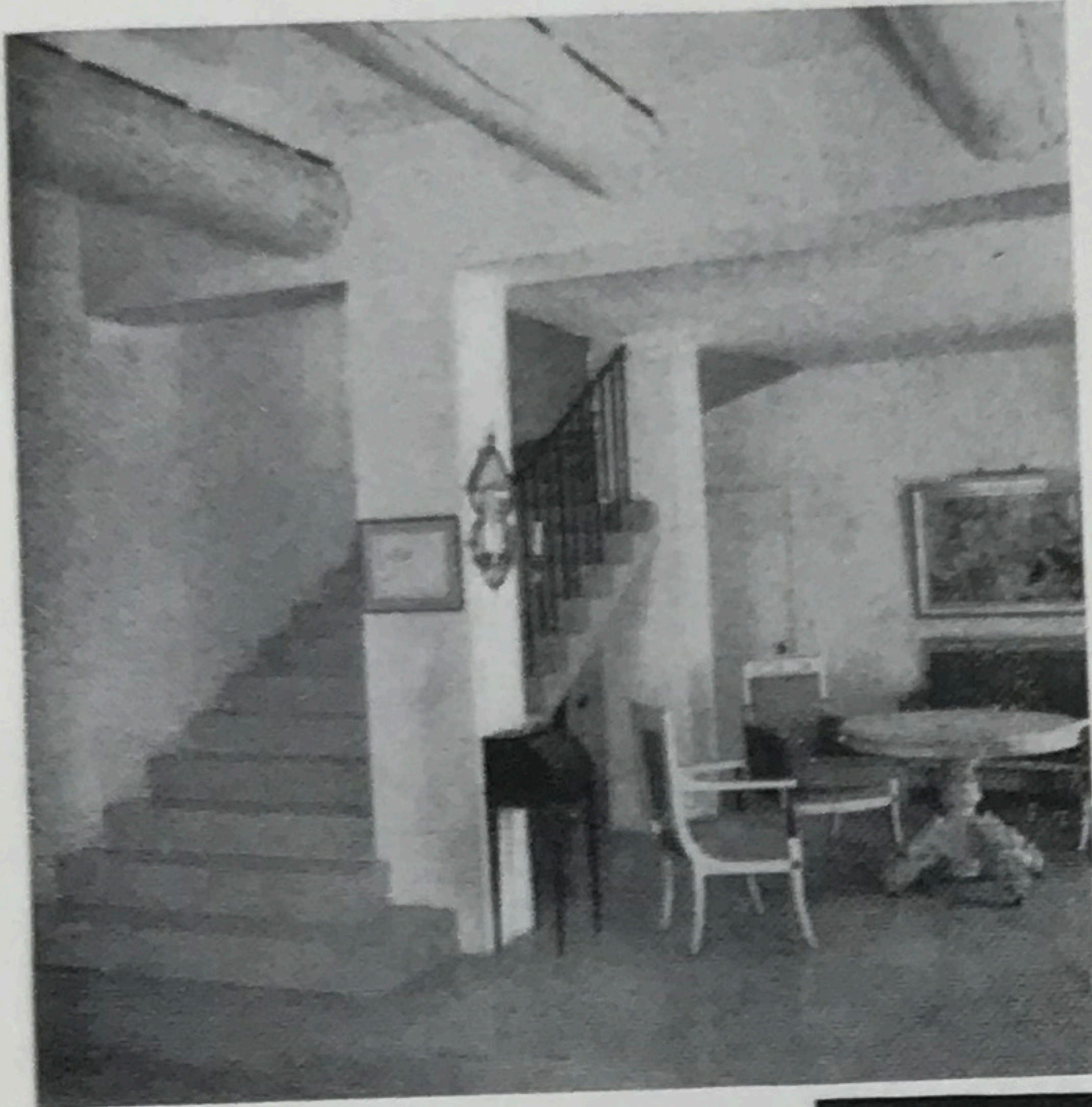
Left and above: *Edilizia Moderna*, August, Milan. Evolution and analysis of design for Milan's new Pirelli skyscraper by Ponti, Fornaroli, Rosselli. Three-point concentration of continuous concrete framework leaves interior completely free.

f r o m a b r o a d



Left: *Architectural Review*, October, London. Altar at Johannesberg by Rudolph Schwarz in provocative review of modern German church furnishings. Inquiry into Encroachment, its agents and effects on the landscape. Halsingborg report. U. S. Embassy buildings.

Below: *Art & Décoration*, October-November, Paris. Two-part country house near Aix-en-Provence combines traditional main house pictured, modern pool and sport pavilion.



Casa e Turismo, June, Milan. Polychromed glass wall lamp by Bruno Munari for Fontana Arte; working drawings of prize-winning Cantù competition furniture.



Left and above: *Domus*, November, Milan. Le Corbusier's new Unité d'Habitation at Nantes is modification and "perfection" of one at Marseilles. Black-walled nursery school on roof has windows reminiscent of Ronchamp chapel.